

duradek

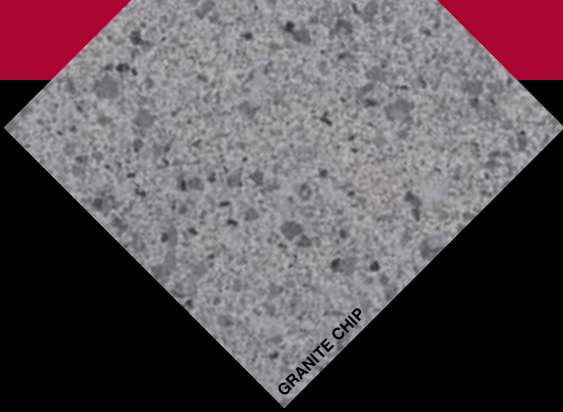


Make A Choice That Lasts



- Sundecks
- Roofdecks
- Hot Tubs / Pooldecks
- Balconies
- Garage Floors
- Washrooms
- Stairs
- Benches
- Gym / Equipment Rooms





ultimate in maintenance-free outdoor flooring. Duradek®'s factory engineered products and professional, detailed installation techniques have

set new standards for waterproofing that works.

*Duradek® ,
The
ORIGINAL
sheet vinyl
membrane for
waterproofing
decks and
balconies,
was developed
to solve leak
problems over
35 years ago.*

The old liquid applied and concrete topping products were the only options previously available, and they were failing repeatedly. Property owners and builders complained about leaks, unsightly appearance, expensive repairs and time consuming maintenance. Duradek® recognized the need for **a better method of waterproofing.**



MANUFACTURE OF DURADEK VINYL SHEETS



All Duradek® membranes are reinforced for multi-directional strength and stability, and have a textured finish for slip-resistance. To increase performance, the vinyl makeup includes mildew inhibitors along with ultra-violet and heat stabilizers. It is also fire-retardant and resistant to most chemicals. Attractive patterns, colors and textures provide a contemporary new look, previously unavailable in the outdoor waterproof flooring market.

Duradek® is continually researching, developing and testing new products and application techniques.

Since 1974, Duradek® has been supplying North America's premier sheet vinyl pedestrian traffic membrane. Along with other PVC products, such as siding, windows and industrial roofing, Duradek® vinyl has gained wide acceptance in the construction industry as the

Duradek Permanently Waterproofs Better Than Any Of The Alternatives



Duradek® offers ongoing classroom and video training to waterproofing contractors.

The Duradek® training is a combination of floor laying skills for appearance, and single ply roofing skills for water tightness. Thorough knowledge of adhesives, sealants, coatings, carpentry, and concrete restoration work are common traits of a Duradek® contractor.

All necessary components of the finished waterproof system are available from Duradek®. This includes the adhesives, sealants, all drains, scuppers and perimeter fastening devices.

All Duradek® products, when applied by a certified Duradek® contractor, are covered by written warranties. Terms are dependant upon product thickness.





Substrates are impossible to control. They shift with everyday temperature changes. This constant movement puts enormous stress on liquid coatings. Pinholes, blisters or surface cracks often result. These allow moisture to get underneath, causing further deterioration of the membrane.

Wood decks rot, splinter, warp and crack. The temporary decorative appeal of wood, unfortunately comes with the time and cost of constant maintenance.



Waterproofing really can be such an ugly business!

Peeling, cracking or delaminating coatings (Urethanes, Epoxies, Acrylics); leaks, rotting wood, mildew and cracked, spalling concrete - these are all common problems with the old fashioned methods of waterproofing decks and balconies.

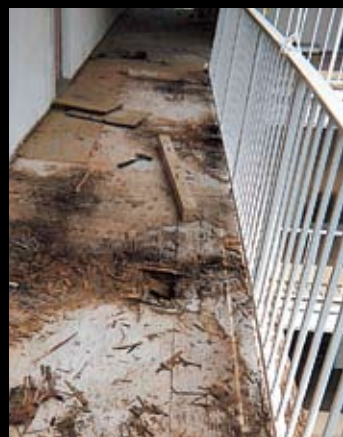


Concrete cracks, becomes unsightly, dangerous and expensive to repair or replace. Entire balconies can collapse or pieces can fall off, possibly endangering lives.

Duradek® is a pre-manufactured, fabric reinforced vinyl sheet that possesses the ability to move with the subsurface, without cracking, bulging or blistering.



With Duradek®'s pre-engineered vinyl sheet membrane system, these all too familiar defects are really a thing of the past. Duradek® successfully bridges cracks that often cause the other waterproofing products to fail.



Both concrete and wood, over time are highly susceptible to the weather. Rain, snow, freezing, thawing, wind and sun, all take their toll.

Leaks and costly water damage have almost always been associated with inadequately protected roofdecks, to the point where avoidance has become the only solution.



Not anymore!

Why The Others Fail

PROBLEMS WITH LIQUID COATINGS

USUALLY REQUIRE MULTIPLE APPLICATIONS.

REQUIRE OPTIMAL CONDITIONS FOR BEST PERFORMANCE.

COATINGS REQUIRE EXTENSIVE SURFACE PREPARATION, PARTICULARLY OVER CRACKS.

WHY IT IS A PROBLEM

THE SURFACE CANNOT BE USED UNTIL CURING IS COMPLETE.

ALTERNATE ACCESS MUST BE PROVIDED.

PROPER ADHESION BETWEEN COATS CAN BE AFFECTED BY WEATHER, TIME AND TRAFFIC.

OPTIMAL CONDITIONS DO NOT OFTEN EXIST. TEMPERATURE AND HUMIDITY FLUCTUATE HOURLY AND DAILY.

TIME CONSUMING, NOISY, DISRUPTIVE AND EXPENSIVE.

HOW DURADEK IS BETTER

DURADEK IS A PRE-MANUFACTURED SHEET, INSTALLED IN ONE STEP -READY FOR IMMEDIATE USE. IT CAN EVEN BE WALKED ON DURING THE INSTALLATION PROCESS, MEANING FEWER TENANT DISRUPTIONS & VACANCIES.

DURADEK CAN BE SUCCESSFULLY INSTALLED IN ANY WEATHER CONDITIONS.

DURADEK IS GLUED TO ALMOST ANY SURFACE, EVEN OVER CRACKS WITH MINIMAL SURFACE PREPARATION.

PROBLEMS WITH WOOD

WOOD DETERIORATES WHEN EXPOSED TO THE ELEMENTS.

WOOD IS SLIPPERY WHEN WET.

WOOD SPLITS, TWISTS, WARPS, SPLINTERS, ROTS, SHRINKS AND REQUIRES PAINTING OR STAINING REGULARLY.

SAFETY HAZARD.

DURADEK REQUIRES NO REGULAR MAINTENANCE EXCEPT CLEANING.

DURADEK CAN BE PURCHASED WITH VARYING DEGREES OF NON-SLIP SURFACES.

PROBLEMS WITH CARPET

CARPET IS NOT WATERPROOF.

CARPET HOLDS WATER AND SLOWS THE DRYING.

CARPET FIBERS DETERIORATE RAPIDLY IN THE SUN.

CARPET MUST BE PUT OVER A WATERPROOF SURFACE OR IT ACCELERATES THE DETERIORATION OF WOOD OR CONCRETE.

SURFACES WHICH ARE CONTINUOUSLY WET, WILL ROT OR DETERIORATE MORE QUICKLY.

REQUIRES FREQUENT REPLACEMENT.

DURADEK IS COMPLETELY WATERPROOF AND ATTRACTIVE.

DURADEK DRIES QUICKLY.

DURADEK HAS A LONG LIFE EXPECTANCY AND CAN BE RE-COATED IN THE FUTURE.

CARPET CAN EASILY BE INSTALLED OVER DURADEK.

"I really was led to believe that properly treated wood would be impervious to the weather. Well, I found out it wasn't, and boy was it a painful experience. Now I know that Duradek is the only guarantee of a maintenance free deck!"

E. Hartmann
Homeowner

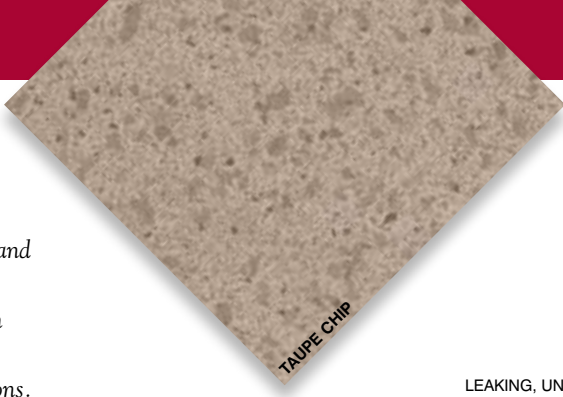


“The level of service and quality installation of six new condominium patio surfaces was beyond our expectations. Waterproofing, structural integrity and artistic appearance. Duradek delivered all of this on schedule, without inconvenience to our homeowners.”

*J. Highwater
President, The Vista Larrabee
Homeowners Association*



DURADEK® ON STEPS, WALKWAYS AND RAMPS OF WATERSLIDE PARK



TAUPE CHIP

COLD AND SNOW
ARE NOT A PROBLEM
WITH DURADEK®



LEAKING, UNSIGHTLY
ROOF OVER WINERY



The Duradek® system of deck waterproofing membranes offers many advantages over the more traditional liquid applied systems. Often entrance ways and walkways (on renovation work) cannot be closed off for even a day. For the commercial property owner or manager, lengthy shut-downs can mean lost revenues and embarrassing inconvenience.

Duradek® sheet vinyl can be applied and used immediately.

Duradek® can be installed in almost any weather, and even over existing coatings. Liquid systems need ideal conditions and a well prepared subsurface to deliver a successful finished job.



GREY



DURADEK® ENHANCES
ALL STYLES OF ARCHITECTURE -
FROM HERITAGE TO MODERN



Why The Duradek System Works Where Others Fail



TRANSFORMED WITH DURADEK® INTO AN APPEALING, WATERPROOF ROOFDECK

LOW MAINTENANCE OUTDOOR FLOORING

AFTER



The Duradek® System is pre-engineered at the manufacturing facility under strict quality control.

What this means, is that once on the jobsite, there is no mixing, mess or smell, and most importantly, no guess work for the applicator. Once the substrate is prepared, the sheets are rolled out, glued down and

mechanically fastened at the perimeters. The sheets are welded together with a hot air process for a completely waterproof membrane. Even with heavy traffic and the most severe weather conditions, these membranes will outlast "painted on" surfaces by years. They will not peel, chip, delaminate or crack, even on high use walkways.



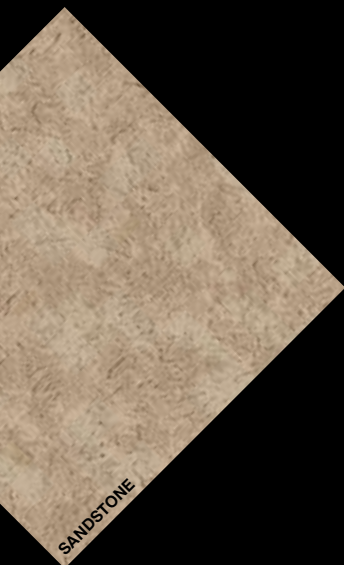
DAYCARE FACILITY



DURADEK® IS IDEAL FOR MULTIPLE OR SINGLE FAMILY



The Duradek® System consists of a number of different types of sheet vinyl products, designed individually for many end uses.



All are textured PVC, laminated to a polyester reinforced fabric for additional strength. Available in an assortment of widths, thicknesses and textures, Duradek® vinyl membranes offer a wide range of waterproofing solutions in both residential and commercial construction.



Heavy duty, vinyl membranes are perfect for use on roofdecks.

Constructed of 60 mils of PVC resin, these products are capable of accepting heavy pedestrian traffic & extreme heat and ultra-violet conditions.

“Through a lot of wear and tear and 14 seasons of wet weather, Duradek has performed better than we ever expected. 120 steps (and ramps) walked on by almost one million customers, and still standing up. There is nothing else that works like Duradek”

L.J. Champigny,
Vice President,
WET 'N' WILD WATERPARK



ICC-ES REPORT
#ESR-2151



CCMC 13134-R

CLASS A
AND CLASS C
FIRE RATED SYSTEMS



Duradek Offers Wide Potential For Commercial Waterproofing Solutions



- ROOFDECKS
- HOT TUBS
- BALCONIES
- GYMS
- EQUIPMENT ROOMS
- POOLDECKS
- GARAGES
- WASHROOMS

Duradek is available in a range of textured surfaces. The relatively smooth vinyls provide a maintenance free, easy to clean surface. Very rough textures offer a high degree of slip resistance, but requires more aggressive cleaning techniques.

Mop / Water Wash



SMOOTH SURFACE

Detergent & Scrub Brush Wash



MORE TEXTURE

Pressure Washer Wash



ROUGH TEXTURE





The Duradek® System is unique in its assortment of widths, thicknesses, patterns, colors and textures.

There is a product for every need and budget. Duradek®'s rough textured materials offer excellent slip-resistance for safe footing on ramps and stairs. The smoother textures offer easy-to-care-for surfaces.



Lighter weight Duradek® vinyls offer cost-conscious solutions for deck and balcony surfaces not exposed to heavy traffic or extreme conditions. For roofdecks or surfaces requiring maximum protection, heavy-duty (Ultra) sheet flooring is ideal.



"Duradek offered me a selection of colors and patterns to choose from to match the exterior of my house, in a product that is so easy to keep clean. My husband is thrilled with the fact that he now has a waterproof workshop under our gorgeous 600 sq. ft. sundeck."

S. & M. Bird,
Homeowners



New contemporary colors, textures and patterns offer the potential for complimentary or contrasting borders, and even custom design work.

Duradek® vinyl surfaces also work very well for interior applications. Indoor pooldecks, hot tub areas, and even garage floors are enhanced by Duradek®'s waterproof, easy to clean surfaces.



Duradek's Added Bonus —

functional dry space beneath any deck for storage areas, workshops, playrooms, living quarters or garages.



The Application Possibilities For Duradek Are Only Limited By The Imagination

ROOFDECKS & SUNDECKS

GARAGE FLOORS

SUNROOMS

BALCONIES

POOLDECKS

HOT TUBS

STAIRS

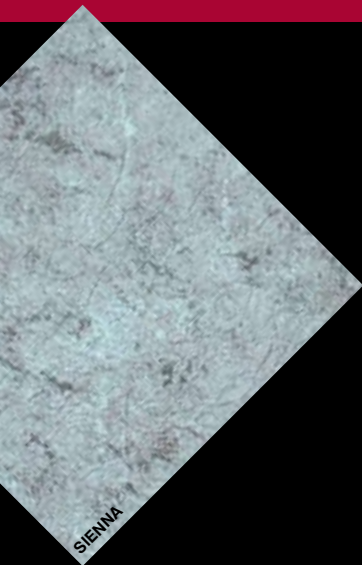
BENCHES



"Duradek was a pricier waterproofing solution. However, the life cycle cost is where I've really saved, considering that to date, I have not had to re-coat any surfaces. The product is 14 years old & still doing its job"

*Peter Collins,
WESTLAKE PROPERTY
MANAGEMENT*

Right Down To The Last Detail Duradek Has It All Worked Out



Permanent secure waterproofing

depends upon proper detailing at perimeters and penetrations. Examples of commonly used details are shown here. Complete architectural details and specifications are available from Duradek® in the standard three part CSI format.

The Original Waterproof Vinyl Flooring System for Decks and Balconies



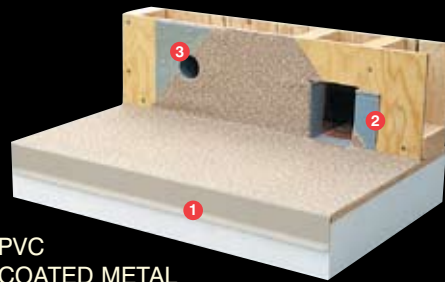
"L" TRIM

- 1 "L" trim secures vinyl on outside and inside edges (optional)
- 2 To meet roofing codes, vinyl is extended up wall by at least 6 inches
- 3 Vinyl is overlapped by building paper and exterior finish



FASCIA FULLY WRAPPED

- 1 Full wrap over fascia
- 2 Inverted "L" trim with sealant (gumstop)
- 3 Butyl tape as secondary sealant (screw seals itself with compression)
- 4 "L" trim at bottom is another option



PVC COATED METAL

- 1 Vinyl is welded to PVC coated flashing
- 2 Vinyl is welded to PVC coated box scupper
- 3 Vinyl is welded to PVC coated overflow



METAL FLASHING WITH PVC CLIP

- 1 Inside back corner folded and welded - NOT cut
- 2 Outside front corner folded and welded - NOT cut
- 3 Galvanized flashing with PVC clip holds vinyl in place
- 4 Roof-quality drain with clamping ring holds vinyl in place
- 5 Colored metal flashing completes curb waterproofing



Duradek Canada Ltd.
8288 129th Street
Surrey BC Canada V3W 0A6
Tel: 604 591 5594 • Fax: 604 591 3100
Toll Free: 1 866 591 5594
E-mail: duradek@duradek.com

Duradek U.S. Inc.
1722 Iron Street
North Kansas City Missouri USA 64116
Tel: 816 421 5830 • Fax: 816 421 2924
Toll Free: 1 800 338 3568
E-mail: duradek@kcnet.com